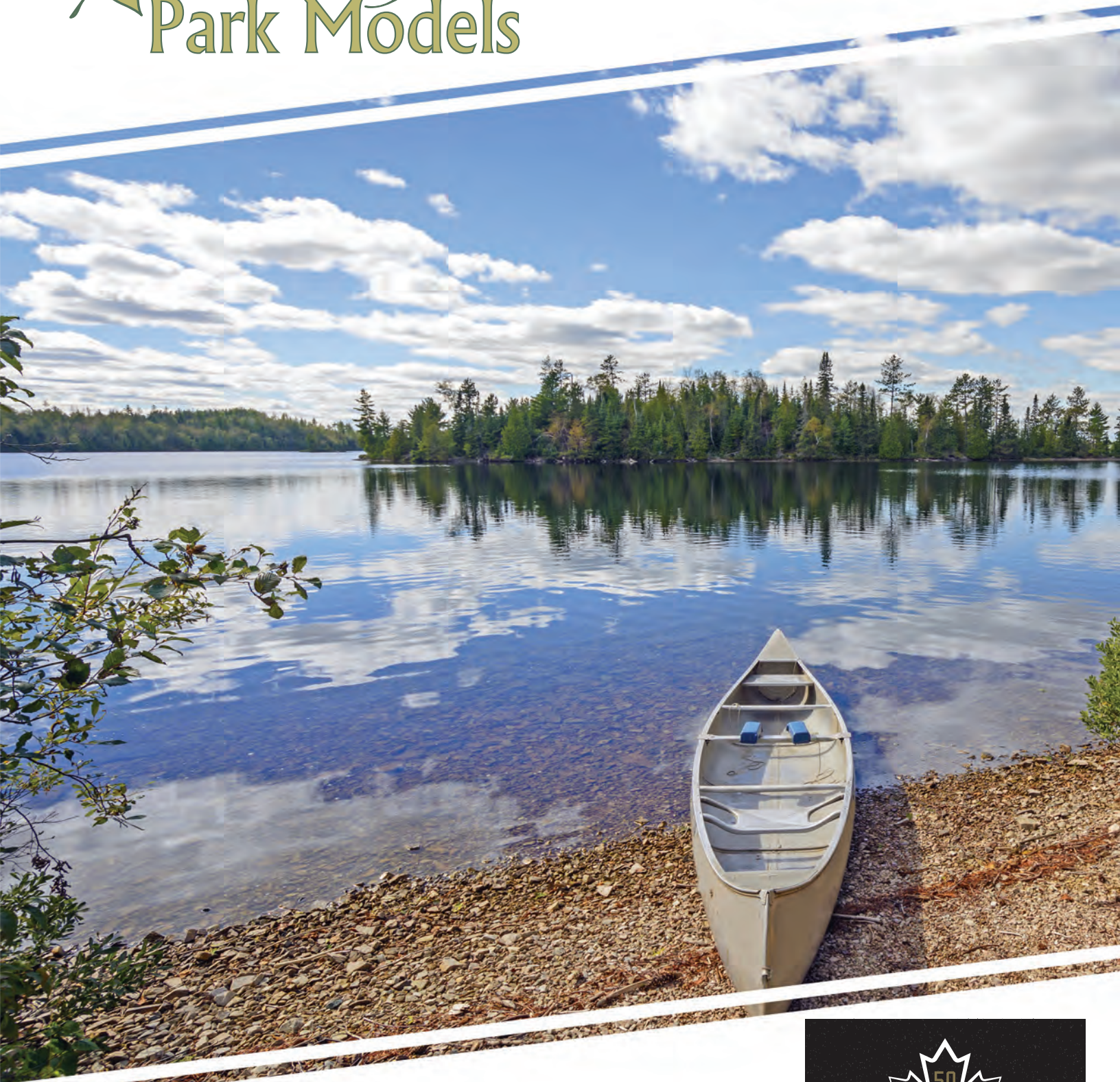




# *Pacific* Park Models



Scan on your Mobile Device  
to get your Digital Brochure



[www.modulinepenticton.ca](http://www.modulinepenticton.ca)



# Moduline Manufactured Homes

## Pacific Park Models Standard Features and Specifications



GENERAL CONSTRUCTION		
Built to Code	CSA Z-241	
Snowload	70psf/3.35kpa GSL 40psf/1.91pa Design Load	
Insulation	Ceiling: R24	
	Walls: R12	
	Floor: R20	
Floor (No Axles)	<b>12 Wide</b>	<b>13 Wide</b>
	2x6 16" O.C	2X8 16" O.C
Decking	5/8" T&G OSB	
Roof Pitch	<b>12 Wide</b>	<b>13 Wide</b>
	7/12	5.5/12
Roofing	15/32" Decking	Architectural Shingle
Eaves	<b>12 Wide</b>	<b>13 Wide</b>
	Front 12"	12"
	Side 12"	6"
	Rear 12"	12"
Exterior Walls	7-6"	
	2x4	
	3/8" OSB Sheathing	
Interior Walls	2x3	
	Vinyl Covered Drywall Panel	
Ceiling	<b>12 Wide</b>	<b>13 Wide</b>
	4/12	3.5/12
	Textured Drywall Vault Throughout	
Siding	Maintenance Free Vinyl Lap	
Fascia	White Wooden	
Front End	Box Bay with Hip Roof & 72x76V Window	
Windows	Double Glazed PVC w/ Vinyl sills.	
	Cordless Cellular Shades (excludes obscured & transoms)	
Doors	Patio Door-Double Glazed & 32" 2 Panel	
	Decorative Coach Light at entrances (excluding porch)	

SPACIOUS BATHS	
Ceramic Tile Backsplash	
White Framed Vanity Mirror with Bar Light	
Obscure Bath Window (plan specific)	
Banjo Top Vanity	
One-Piece 60" Fiberglass Tub/Shower w/Single Lever Faucet (most models)	
Power Bath Fan on Separate Switch	
GFI Receptacle	
Comfort Height, Dual Flush Toilet	
Shower Rod & Curtain	

UTILITY SERVICES	
Electrical Service	50 AMP with 25' Cord
Heating	96% High Efficiency 2 Stage Propane Furnace with Electronic Ignition
Water Heater	30 Gallon Electric
Communication Outlets	(1) Primary Bedroom, (1) Living
Rear Propane Line with Roadside Regulator	
Smoke & CO2 Detectors per code	
Heat Tape Plug	
Dehumidistat Control	
Shut Off Valves at all Sinks	
Exterior Frost Free Tap	
Exterior GFI Electrical Outlet	

TASTEFUL INTERIORS	
Flooring	Carpet: Primary Bedroom
	Quality Cushioned Linoleum: All other areas
Designer Glass Light Fixtures	
Winthrop Interior Doors	
Decora Switches & Receptacles	
Upgraded Coastal Hemlock Trim Throughout	
(3) Chrome Coat Hooks	
Primary BDR: Nightstands w/ Receptacles & Single Overhead Cabinet	
Primary BDR Closet with Bypass Doors & 3 Drawer Dresser (select models)	

BRIGHT, BEAUTIFUL KITCHENS	
European Deluxe Cabinetry with Crown Molding (exc Baroque Roma)	
Pantry (most models)	
Raised Fridge Cabinets	
Ceramic Tile Backsplash	
Double Stainless Steel Kitchen Sink	
Chrome Single Handle Pull Out Faucet	
Window over Kitchen Sink (plan specific)	
Exterior Vented Range Hood with Light	
Fridge Opening 36" x 72"	
18 cu ft, 2 Door Frost Free Refrigerator	
30" Propane Range	

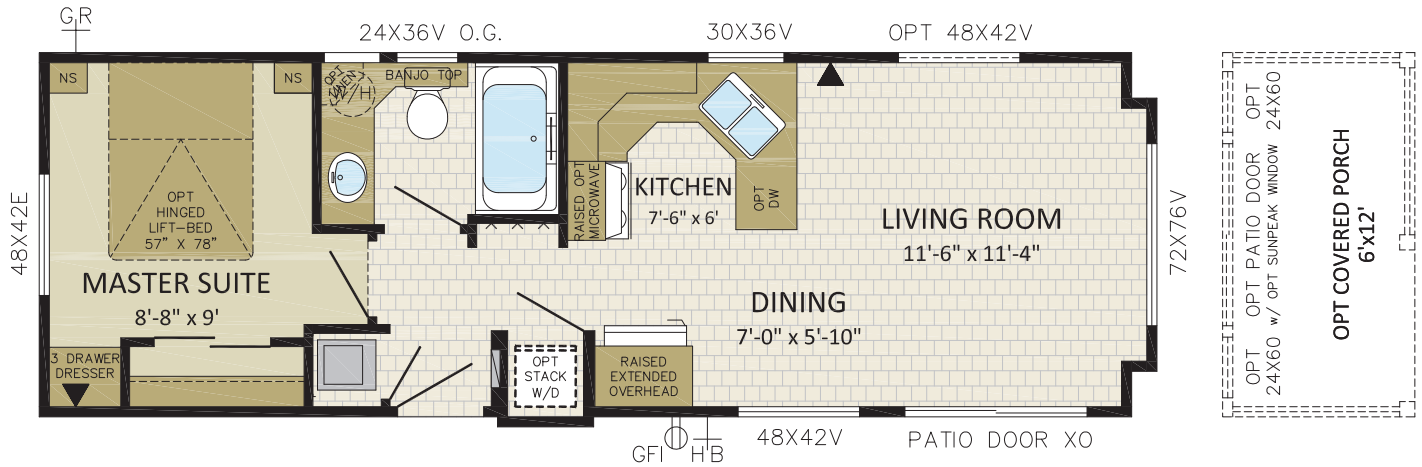
2023.1

### Ten Year Warranty

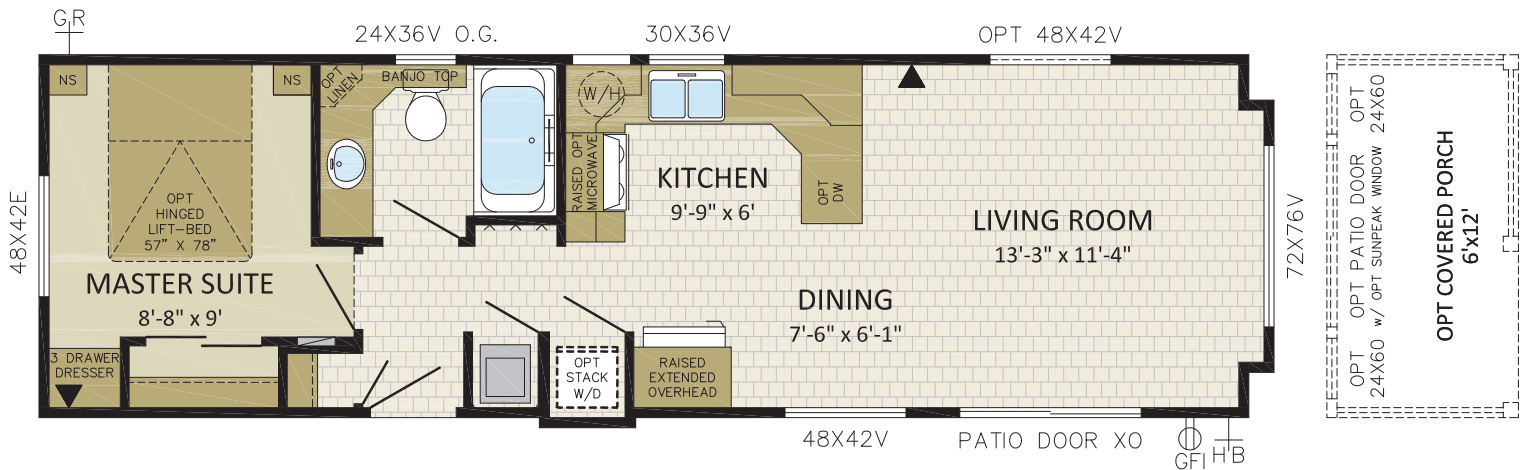
Square footage and room sizes are approximate.  
Due to our policy of progressive product improvements, all prices and specifications are subject to change without notice.

# 12' Wides

1 BDRM, 1 BATH, FRONT LR | 12'x36' | 440 sqft | 12PM36001



1 BDRM, 1 BATH, FRONT LR | 12'x40' | 488 sqft | 12PM40001

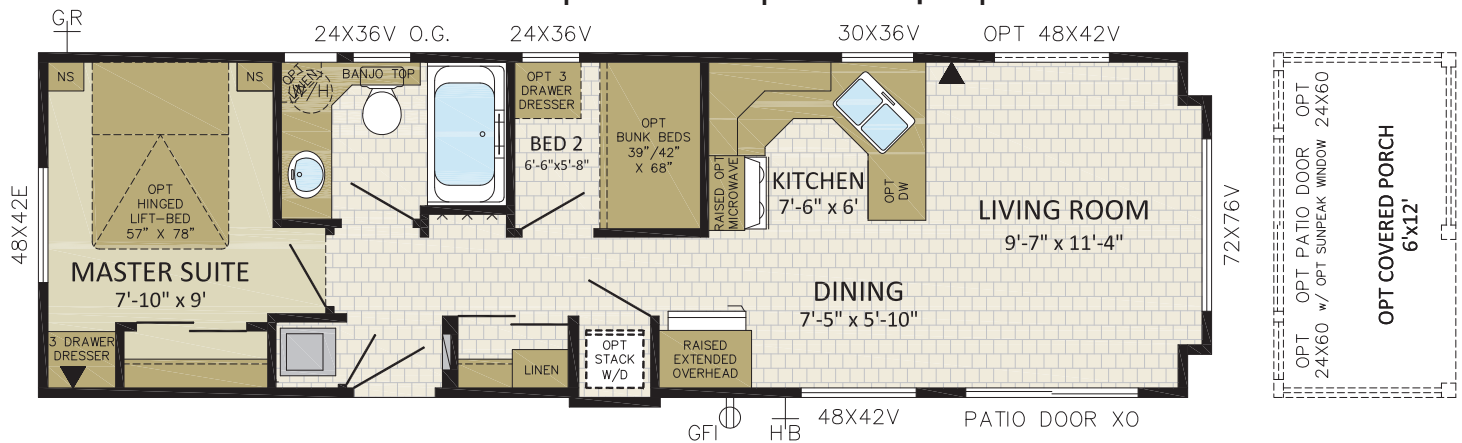


**Your Get-Away Cottage,  
With All The Comforts Of Home...**

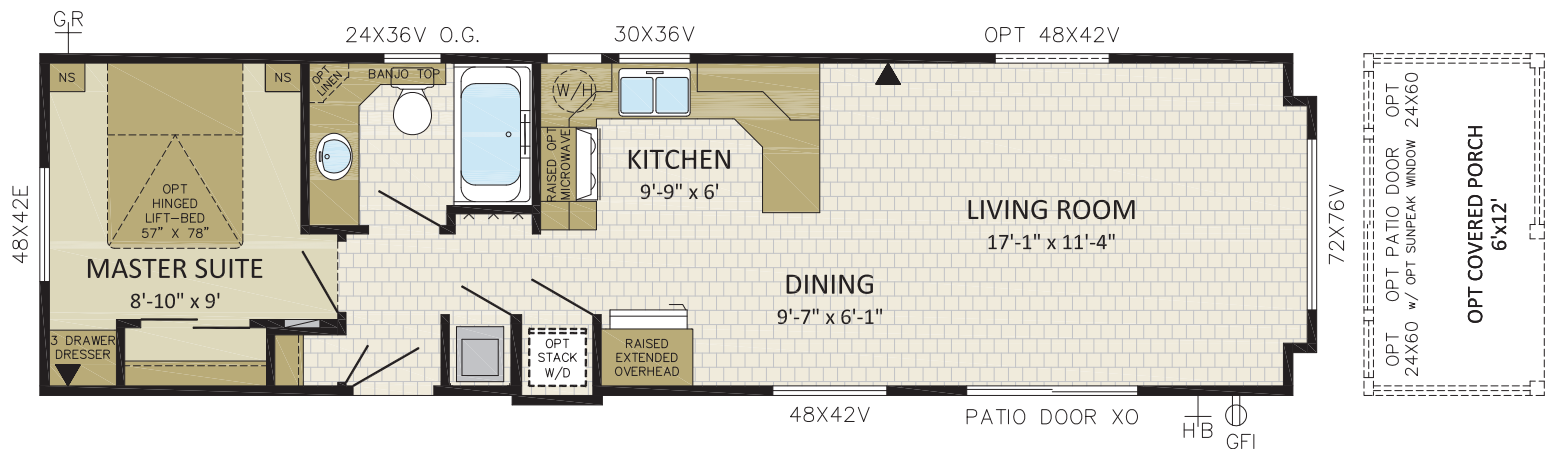




## 2 BDRM, 1 BATH, FRONT LR | 12'x40' | 488 sqft | 12PM40002

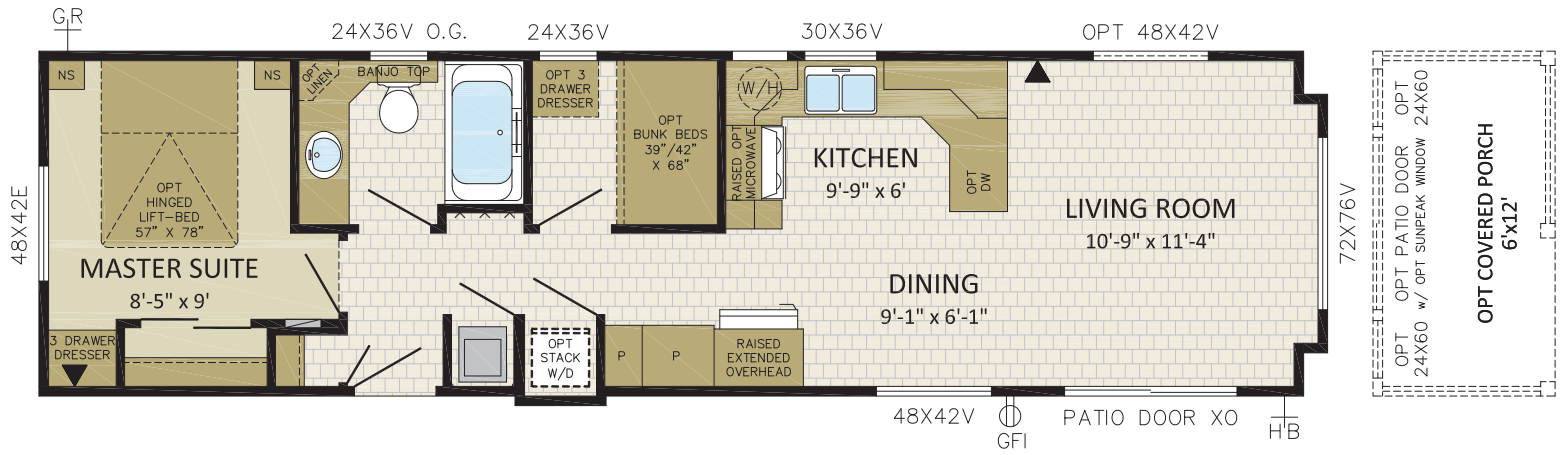


## 1 BDRM, 1 BATH, FRONT LR | 12'x44' | 536 sqft | 12PM44001





## 2 BDRM, 1 BATH, FRONT LR | 12'x44' | 536 sqft | 12PM44002



**GETTING AWAY** to your place at the lake or at the golf course should be as easy as getting in the car and just going. **PACIFIC PARK MODEL** homes from **MODULINE** make it more than easy; they make it an absolute delight!

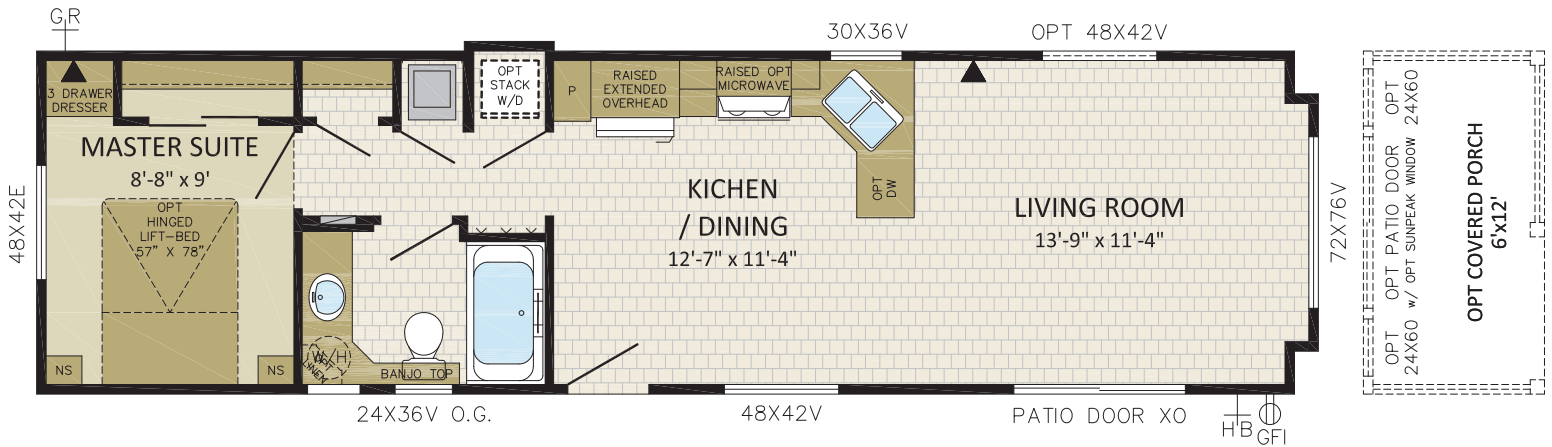
**RELAX IN STYLE** with homes that celebrate natural light and space with cathedral ceilings, panoramic bay windows and a refreshing open design concept.

You don't have to abandon comfort to **ENJOY** your get-away. With features like high quality cushioned vinyl floors, carpeted master bedroom, two-door refrigerator-freezer and 30" propane range, plus a wide range of available options and select features, you'll have **ALL THE COMFORTS** of home. Selected models even offer a second bedroom with optional bunk beds.

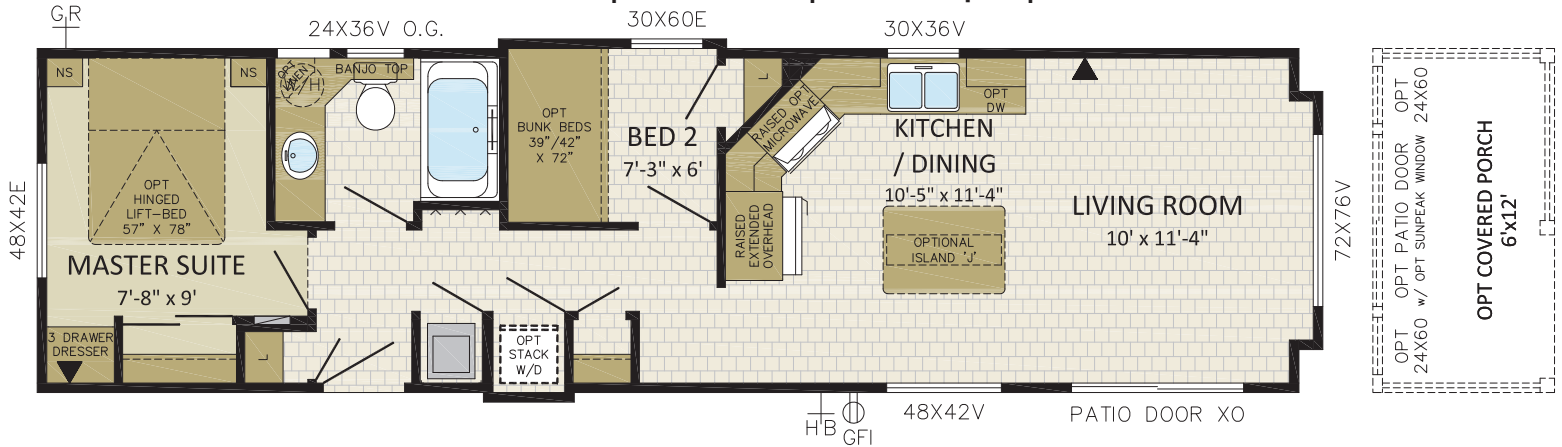




1 BDRM, 1 BATH, FRONT LR | 12'x44' | 536 sqft | 12PM44003

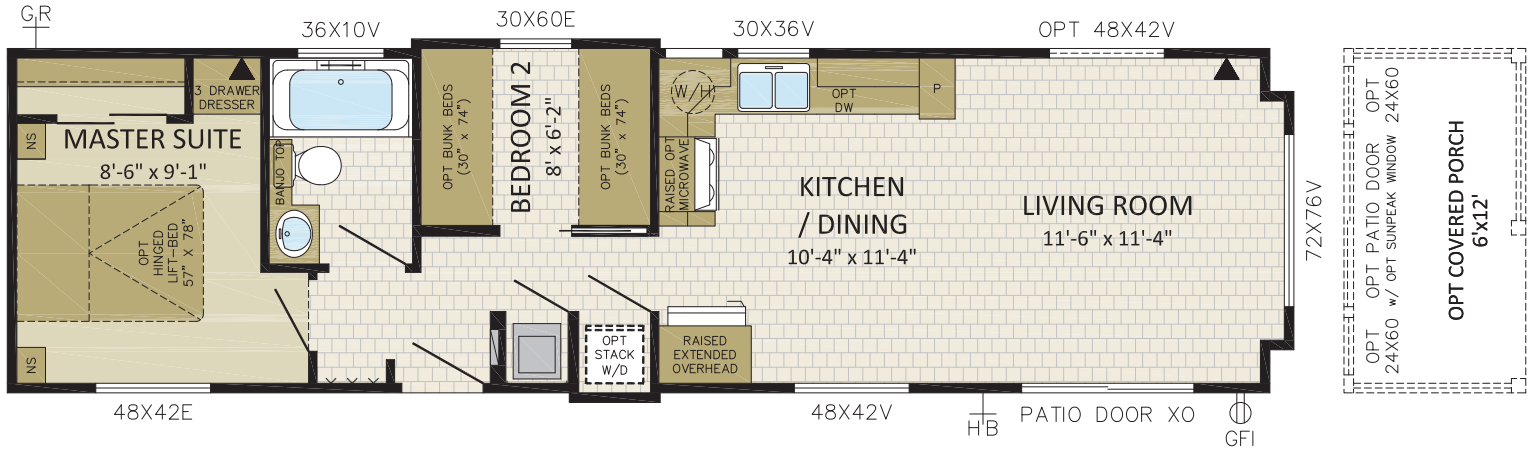


2 BDRM, 1 BATH, FRONT LR | 12'x44' | 536 sqft | 12PM44004

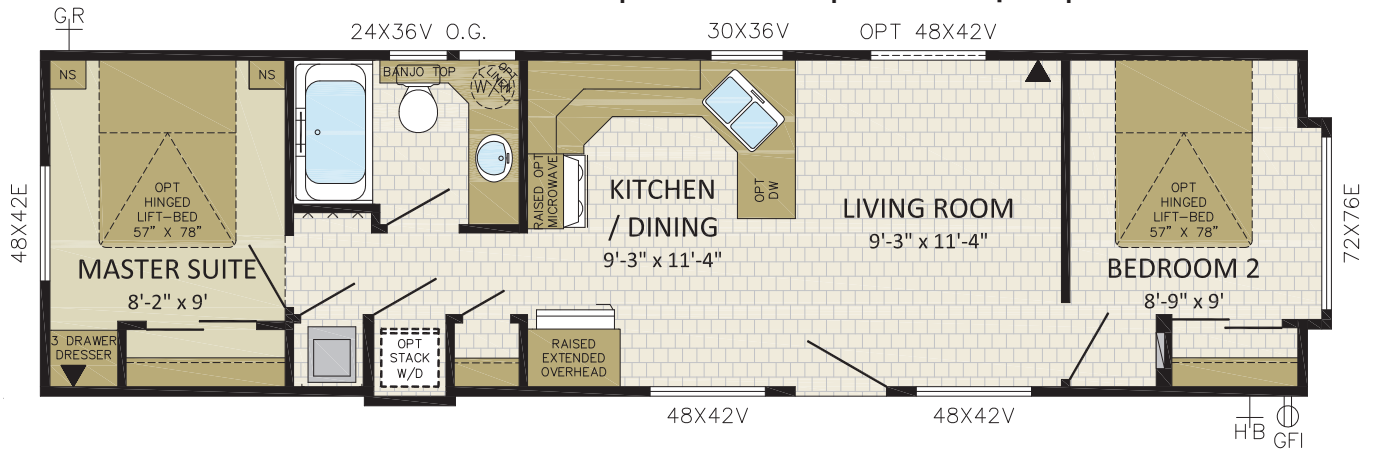




## 2 BDRM, 1 BATH, FRONT LR | 12'x44' | 536 sqft | 12PM44005



## 2 BDRM, 1 BATH, FRONT BDRM | 12'x44' | 536 sqft | 12PM44006



Shown with Optional:

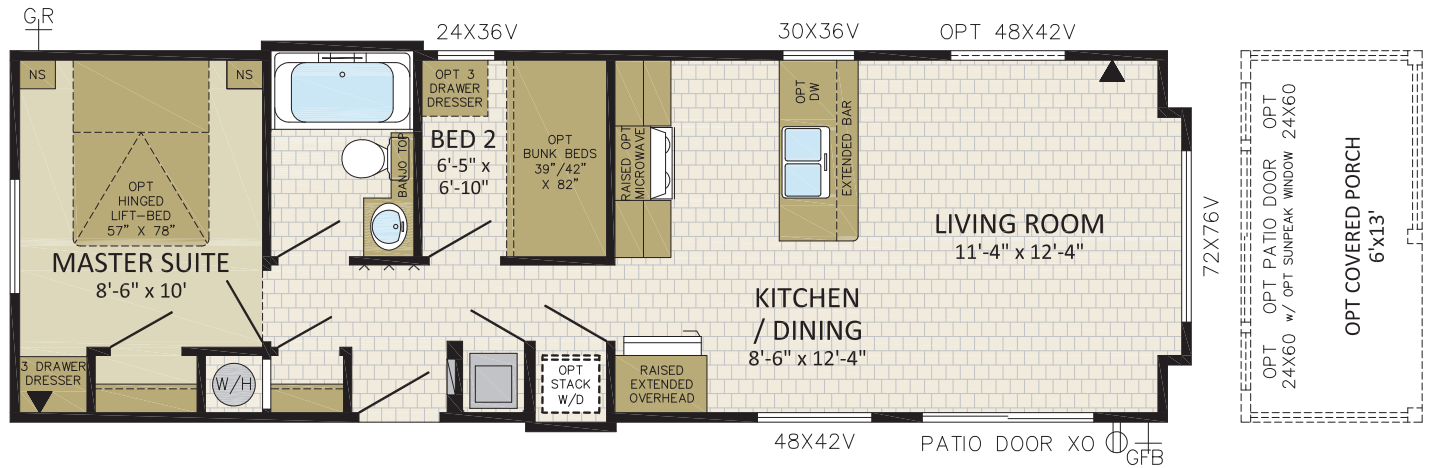
- \* Painted Fiber Cement Siding
- \* Corrugated Metal Siding
- \* Shed Dormer
- \* French Exterior Door
- \* Upgrade Windows & Transoms





# 13' Wides

2 BDRM, 1 BATH, GALLEY KITCHEN | 13'x40'6" | 536 sqft | 13PM40601

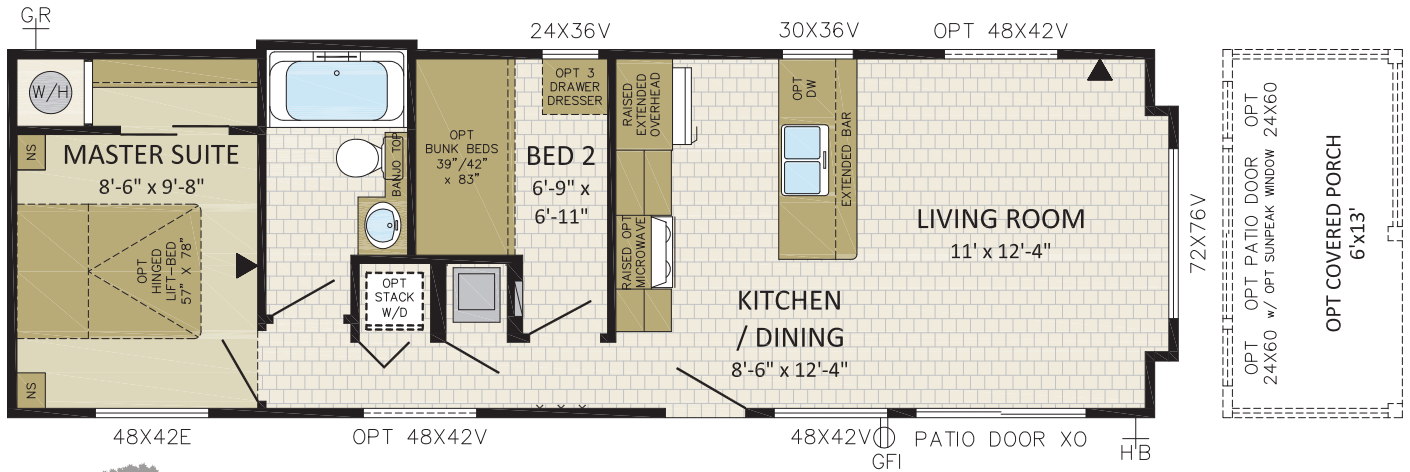


"After buying our vacation home we have all the room we need to spoil our grandchildren"



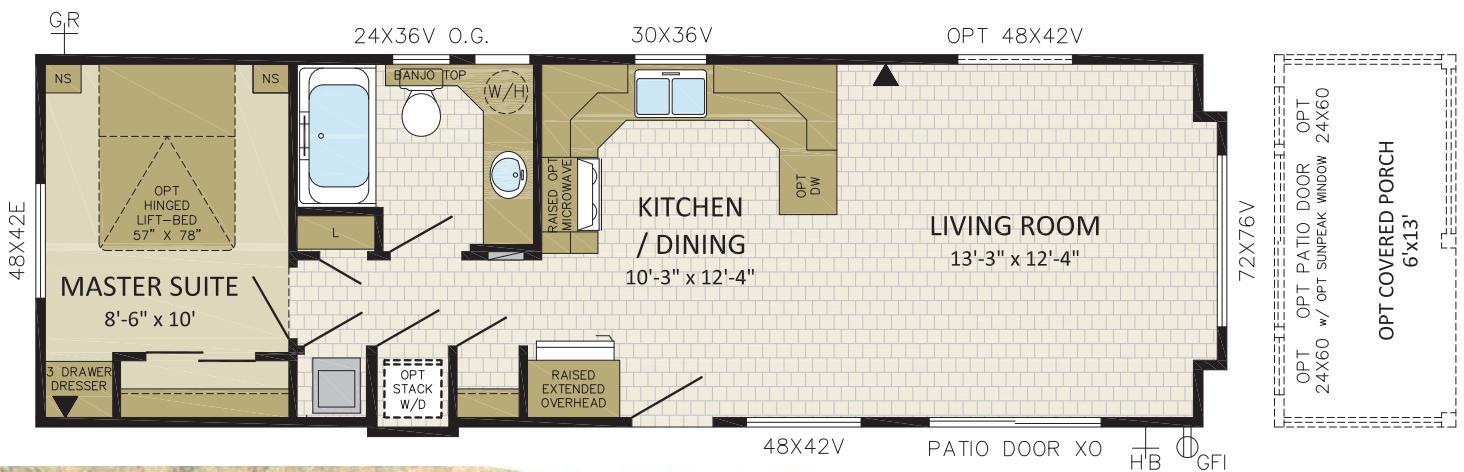


## 2 BDRM, 1 BATH, GALLEY KITCHEN | 13'x40'6" | 536 sqft | 13PM40602



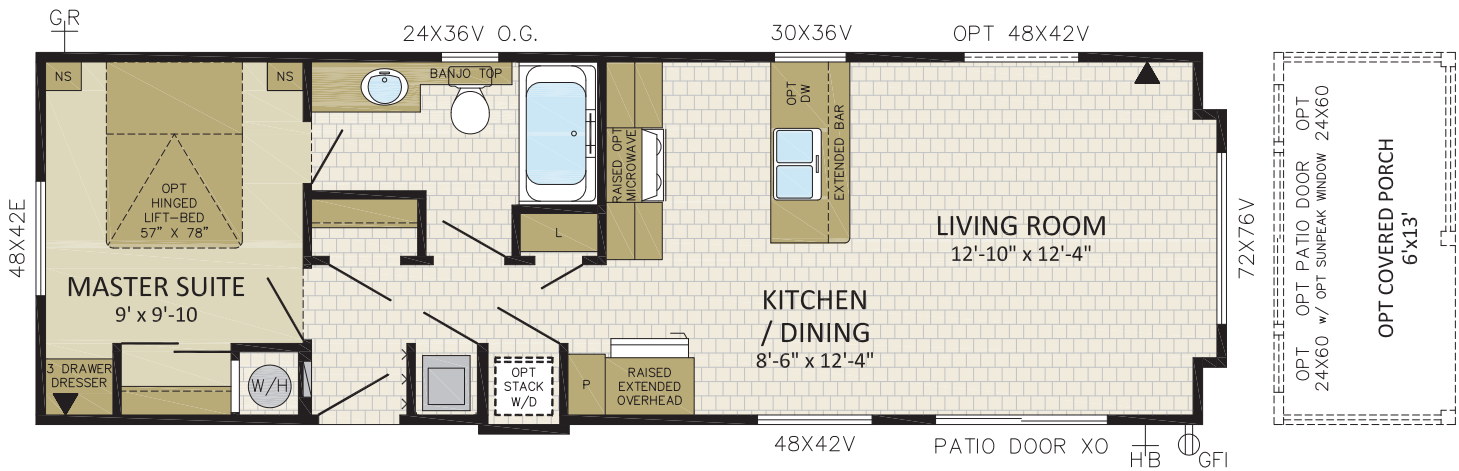
With stunning, bright interior spaces and smart floor plans to choose from, you can accessorize the Pacific Park Model to create a home that is uniquely yours, inside and out.

## 1 BDRM, 1 BATH, FRONT LR | 13'x40'9" | 538 sqft | 13PM40901





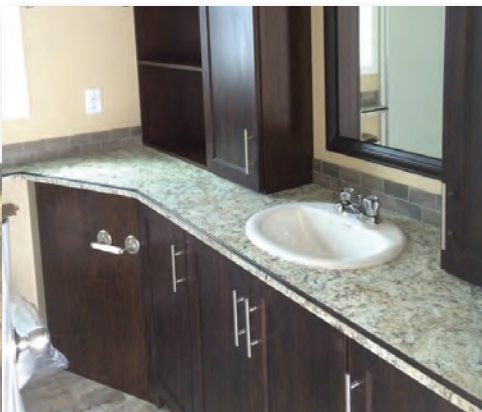
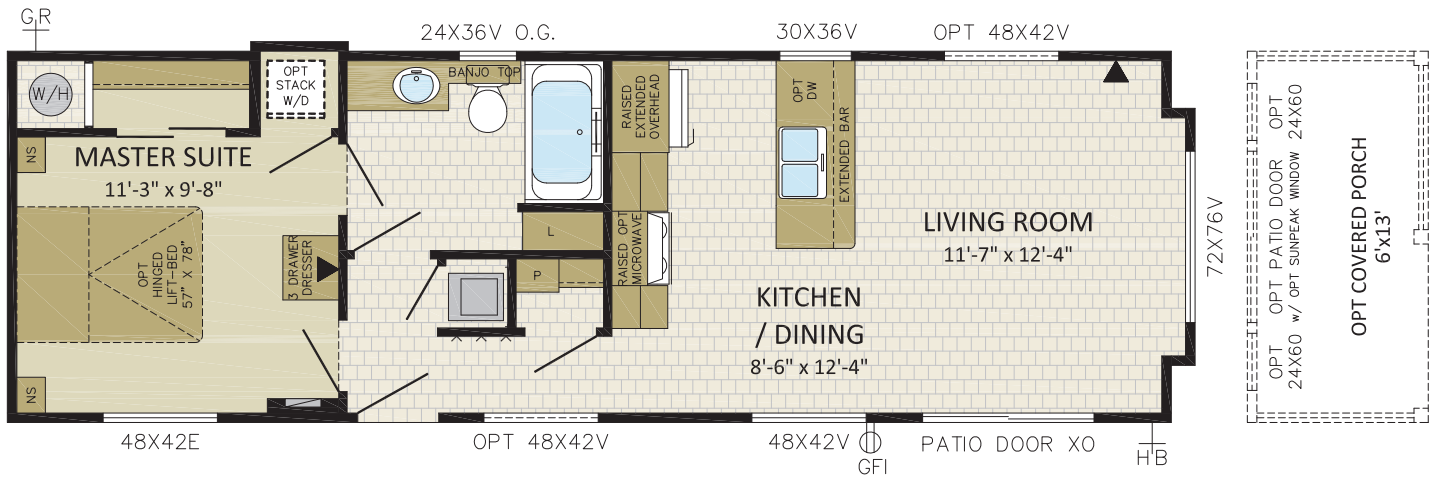
1 BDRM, 1 BATH, GALLEY KITCHEN | 13'x40'9" | 538 sqft | 13PM40902



Note:  
Echo Bay as shown in  
photo is for 12' model.



1 BDRM, 1 BATH, GALLEY KITCHEN | 13'x40'9" | 538 sqft | 13PM40903







# Moduline

Proudly Built in Canada

[www.modulinepenticton.ca](http://www.modulinepenticton.ca)

1175 Railway Street  
Penticton, BC  
V2A 5X5

P:250-493-0122  
F:250-493-0133



a proud supporter of  
Ronald McDonald House

Authorized Dealer:

#### DISCLAIMER:

Due to continuous product development and improvement, prices, specifications, and materials are subject to change without notice or obligation. Square footage and other dimensions are approximate. Included images are artist renderings and are not intended to be an accurate representation of the home. Renderings and floor plans may be shown with optional features or third-party additions.

